

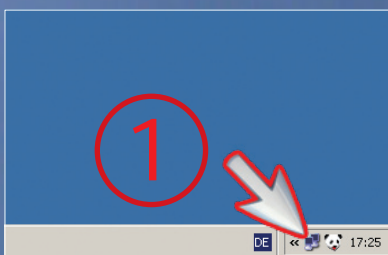
# Hotspot

## Settings

Open the internet browser and log in with your access information.

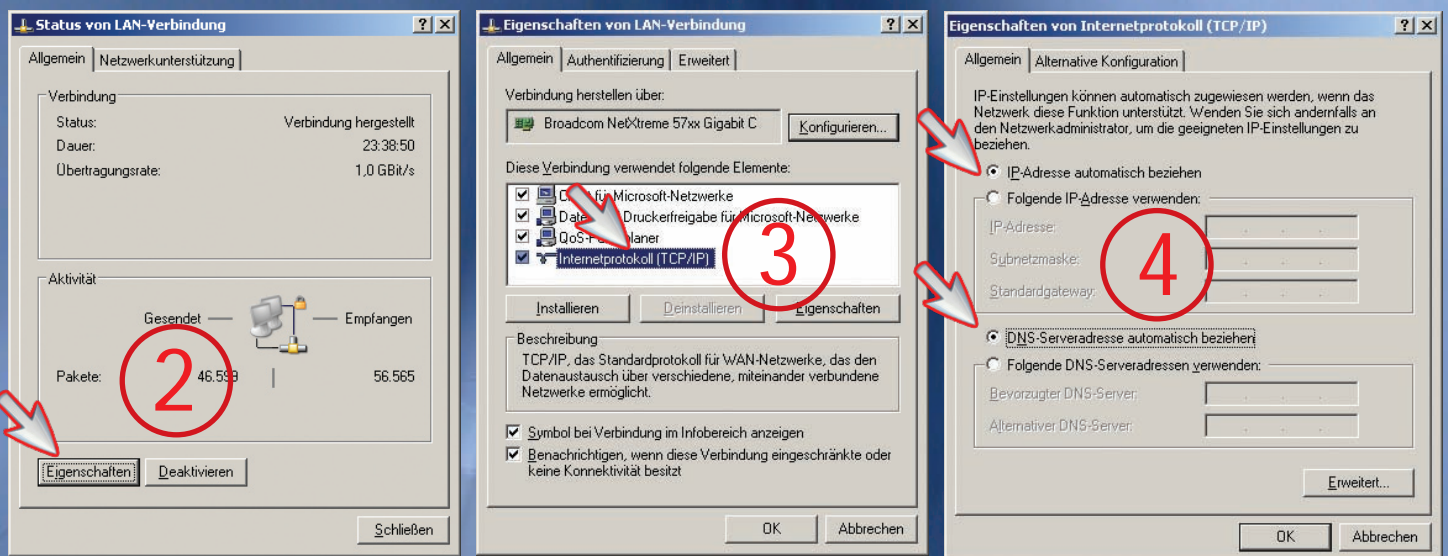
Most of the laptops are already set up and allow an easy WLAN access.

If the data on your laptop was modified, then you have to check the network settings as follows:

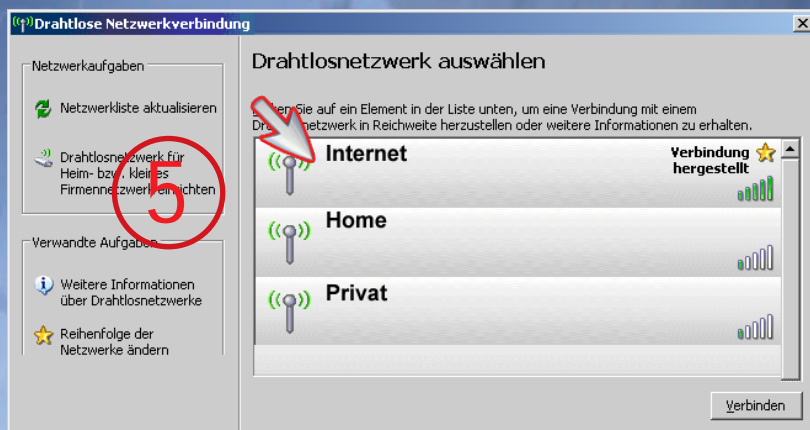


Click on the monitor (on your desktop in the lower right corner) (1) and choose „properties“ (2).

With a double click on the „internet protocol“ (3), you can adjust the settings on your network card.



This has to be selected: „obtain IP address automatically“ and „obtain DNS-server address automatically“ (4)



If there are more than one WLAN network listened, then choose the connection "internet" (5) !

Check if your anti virus program or firewall will permit this IP address. If not, please adjust or change it.

# Internet

# Hotspot

Have you accidentally shut down the browser before logging out?

Enter the IP-address

# 10.5.50.1

into the address bar and press "enter".

The log-out window appears and you can log-out easily.

